



ANNUAL REPORT



2019-2020



It's been a year of growth, consolidation and change



Farmers and growers have persisted with rural recycling, despite challenges.



Vision

Agrecovery is recognised as a global leader in sustainable farm waste management



Purpose

To promote and enable sound inorganic waste management practices and product stewardship for the primary sector

Our aim is to help farmers and growers be good guardians of their land by providing safe and sustainable solutions for clearing rural waste. We strive to keep not only New Zealand clean, but to play our part for the future of the planet as well – by refusing to turn our waste into someone else's problem. This is the backbone of our organisation, which this year faced some roadblocks due to the Covid-19 pandemic which took hold in the second half of the financial year.

The resulting lockdown measures did not dissuade rural communities from recycling. In fact, we've been pushed to keep up with the demand since services returned to normal. Thankfully, there is no evidence of an increase in burning or burying waste. This demonstrates the increasing drive and commitment by farmers and growers to be good guardians of their land for future generations.

You only have to see the number of triple-rinsed agrichemical containers being returned to our sites to know that rural recycling has struck a chord with farmers and growers up and down the country.

That doesn't mean we stop there. More needs to be done to collect the rest of the containers and other rural plastic. As we seek to grow, any new initiative we instigate must be robust, efficient, enduring, and be easy for farmers and growers to use. There also needs to be the recycling infrastructure to handle this plastic, so it can be reused – supporting a circular economy.



AGRECOVERY
Rural Recycling Programme

We turn waste into something useful



↓ CONTENTS

- 06 – 2019-2020 Year in review
- 08 – Leadership message
- 11 – Around the regions
- 12 – Sites
- 13 – Recycling events
- 18 – Collection totals
- 19 – Sites around New Zealand
- 20 – Meet the board
- 21 – Meet the staff
- 22 – Participating brand owners

Freephone: 0800 AGRECOVERY (0800 247 326)

Landline: 04 499 6777 Email: info@agrecovery.org.nz

2019-2020



Year in Review

→ PLASTIC RECYCLING

WE HAVE COLLECTED OVER

405.4 TONNES
of plastic

This is made into useful new products
right here in New Zealand.

→ EVENTS

WE HAVE COLLECTED OVER

38.2 TONNES
of waste

Collected from one-stop shop rural
recycling events in six locations

→ PLASTIC COLLECTED FROM FARMS

71,044 KG
Containers collected

Total of
117
collections

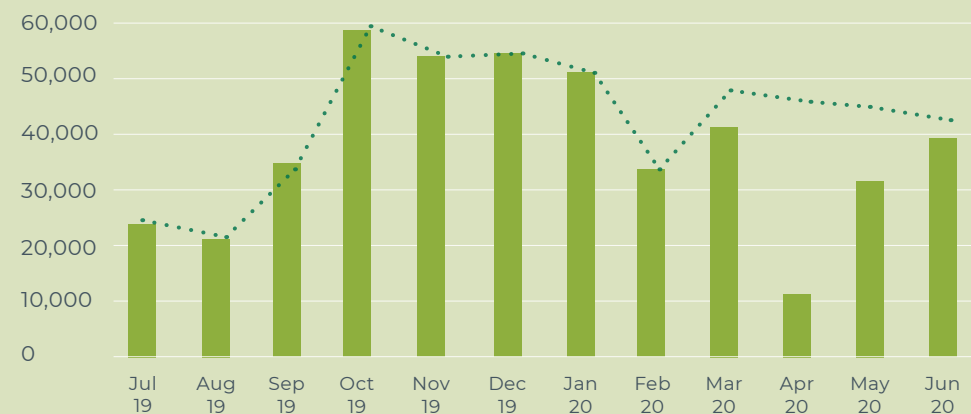


58,740 KG
Drums collected

Total of
259
collections



→ COVID-19 EFFECT ON PLASTIC COLLECTION



The effect of Covid-19 on recycling rates around the country caused a drastic decline during the government's lockdown measures, especially during Alert Levels 3 and 4. Our services could not run from March 23 to May 14 and were limited after this period. It is challenging, at best, to say how this affected our recycling rates, especially if considering people's motivation to recycle during and after this period. However, based on results from previous years, it caused an estimated decrease to our yearly recycling rates of 13.5 percent.

→ CHEMICAL PROGRAMME

25.456 tonnes of unwanted or
obsolete chemicals safely treated
and disposed of.

Qualified chemical contractors
collect and dispose of chemicals
in accordance with New Zealand
regulations.



Leadership Message



from the Chair

The 2019-2020 financial year was one of growth, consolidation and change. Most notably was the disruption that the Covid-19 pandemic caused to our operations, recycling results and ways of working and travelling. Despite this, we have some exciting initiatives in the pipeline that will see our programme grow and expand. One, I am particularly excited about, is finding a sustainable and enduring system for recycling seed, feed and fertiliser bags and teat seal intra-mammary tubes. The government signalling of regulated product stewardship for agrichemicals and farm plastics will further grow our programme. The key item to address is ensuring that there are sustainable end uses for all the plastic we aim to recycle.

While the quantity of plastic collected plateaued this year, it is still a commendable 405.4 tonnes. This result was tempered by Agrecovery's services being paused for almost two months during the Covid-19 response.

It is rewarding to see the support for Agrecovery continue to grow, with more brands taking responsibility for their products, and an increasing number of farmers and growers signing up to use our service. Our brand owners should be commended for their commitment to product stewardship. I also appreciate the



Adrienne Wilcock
Agrecovery Chair

efforts of our many supporters, including the businesses and councils who provide a collection site on our behalf. We are also edging closer to 100 recycling drop-off points throughout New Zealand – proof of a truly nationwide scheme.

A significant amount of unwanted or obsolete chemicals were cleared from farms and safely disposed of during the year.

The quantity of chemicals that were taken off the market years ago and continue to be booked for collection is quite startling. The amount that may still be in farm sheds around the country remains unknown. I appreciate the support of the regional councils who help us to collect and safely dispose of products that are outside of our brand owner base.

The Covid-19 pandemic didn't just disrupt our operations, it temporarily disrupted the daily routines within the business. Zoom and Microsoft Teams meetings became the norm as travel throughout the country was curtailed. As for many entities around the globe, the disruption created an opportunity to adapt and find alternative ways to do business, including remote board meetings and working from home.

Instigating new recycling programmes is exciting, but any programme we initiate must be robust, efficient, and enduring. Even more critical is that such a scheme is easy for farmers and growers to use.

Regulated stewardship has been officially signalled for five problematic waste streams including agrichemicals and their packaging. As a competitively neutral not-for-profit organisation, Agrecovery is ahead of the game and ideally positioned for regulated status. As part of this, all agrichemicals, and eventually the comparable domestic products on the

market, will be required to belong to an accredited product stewardship scheme. This ensures a sustainable solution, allowing the end user to dispose of residual chemicals and packaging for free.

New Zealand continues to lack the infrastructure to process some types of plastics, and some are more challenging than others. There is an obvious need for further investment in this due to the Basel agreement, which intends to limit the opportunity to export plastic offshore.

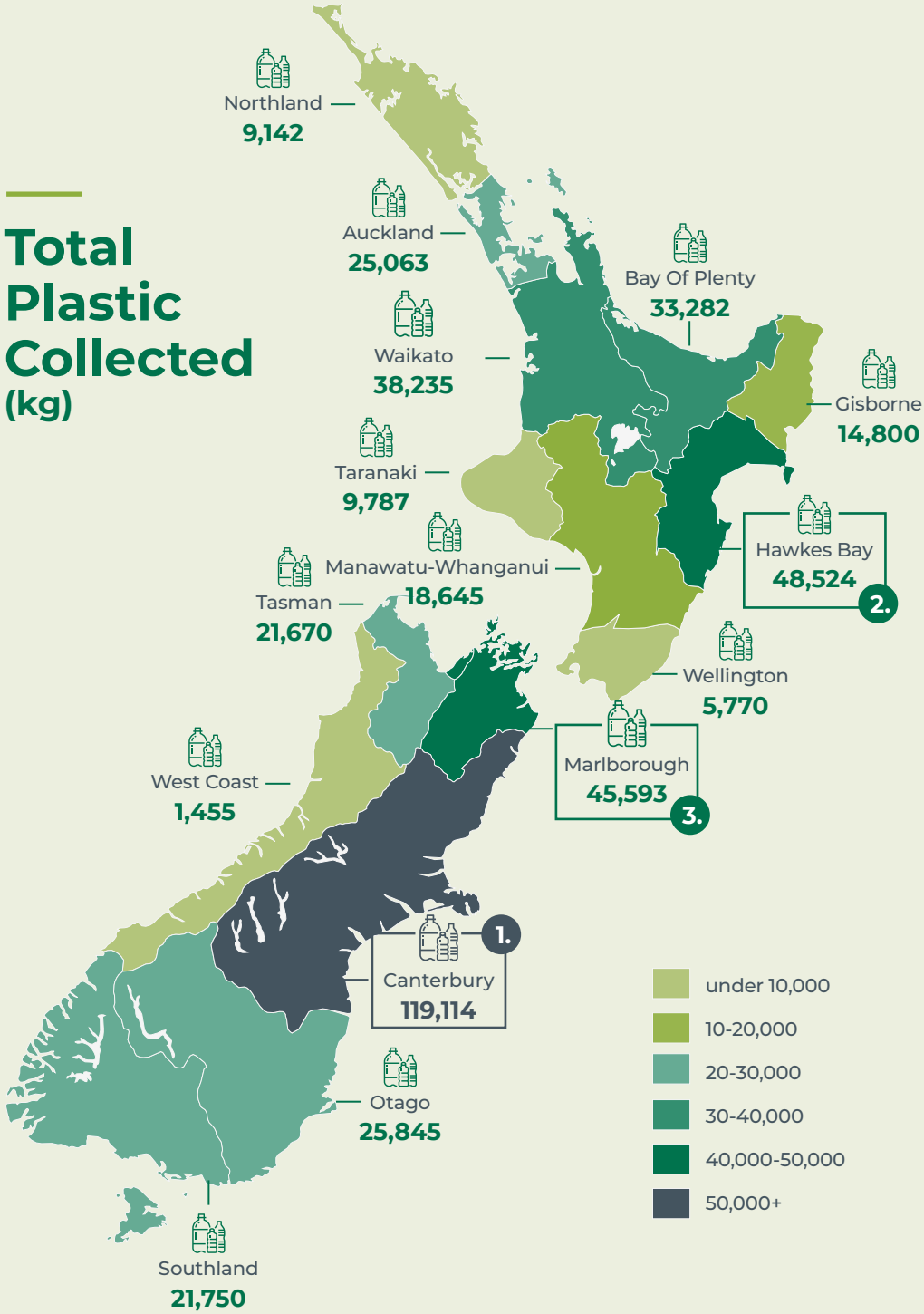
Costs are rising and compliance is increasing. The government proposed an increase in the waste levy which is charged on all waste sent to class 1 landfills. It will incrementally increase from \$10 to \$60 a tonne from 2024. The banning of burning and burying inorganic waste on farm in all regions is also on the horizon.

Agrecovery will continue to engage with partners and stakeholders to assist the primary sector in the move away from a linear - make, take and waste economy - to a circular one, where waste is recycled and reused. This will be done by seeking solutions for diverting recyclable waste away from landfill in the long term.

Finally, I want to thank the Agrecovery board and management for another positive and productive year, despite the disruption that Covid-19 brought. This disruption, and subsequent uncertainty, proves the need for us all to be adaptable and agile in an ever-changing world.

Your high level of engagement continues to ensure the success and strategic growth of the Foundation on behalf of all our stakeholders.

Total Plastic Collected (kg)



Around the regions

Regions	Containers collected from sites	Containers collected from farms	Drums collected from farms	Total plastic collected (kg)
North Island				
Northland	7,060	750	1,332	9,142
Auckland	13,709	9,240	2,114	25,063
Waikato	14,670	9,550	14,015	38,235
Bay Of Plenty	19,160	2,605	11,517	33,282
Gisborne	14,470	-	330	14,800
Hawkes Bay	31,239	13,730	3,555	48,524
Taranaki	2,910	3,000	3,877	9,787
Manawatu-Whanganui	15,490	1,050	2,105	18,645
Wellington	5,250	-	520	5,770
South Island				
Marlborough	37,668	3,100	4,825	45,593
Tasman	14,930	-	6,740	21,670
West Coast	750	535	170	1,455
Canterbury	91,810	22,194	5,110	119,114
Otago	24,480	500	865	25,845
Southland	15,495	4,790	1,465	21,750

→ Sites

COLLECTING THE MOST PLASTIC

PLASTIC COLLECTED (KG)

Blenheim - Resource Recovery Park	32,198
Methven - Molloy Agricultural Spraying	32,180
Gisborne - Harvest Transport Yard	14,470
Hastings - Whakatu Farmlands	12,522
Pukekohe - Farmlands	7,791
Te Puke - Panax Solutions	7,710
Ashburton - Ruralco	7,680
Horticulture Hastings	7,549
Rolleston - Pines Resource Recovery Park	7,220
Richmond Transfer Station	7,150

FOLLOWING CLOSELY IS TEMUKA, GORE, AND MOTUEKA

→ NEW SITES

We expanded our collection network to include seven new sites

Kaikoura - Innovative Waste
Otautau Farm Source
Raglan - Xtreme Zero Waste
Waiau Transfer Station
Tinwald Wholesale Seeds

This Increases our coverage to **96** sites across rural New Zealand.

Three sites relocated – Otaki, Murchison and Seddon

Recycling events


Our events successfully recycled or sustainably disposed of:


8,029kg
Plastic Containers


12,065kg
Chemicals


6,203kg
Oils


91.6kg
Persistent Organic Pollutants


7,045kg
Silage Wrap


4,295kg
Fertiliser, seed & feed Bags

A safe, sustainable and convenient option for disposing of farm waste is the ethos behind the Agrecovery one-stop shop events, where rural communities can recycle and sustainably dispose of a variety of end-of-life rural products and packaging.

The recycling events successfully recycled or sustainably disposed of agrichemical containers, unwanted agrichemicals, used motor oil, seed and feed bags, and silage and bale wrap.



One-stop shop

Recycling events →

Farmers and growers in Buller, Southland, Selwyn, Timaru, Matamata-Piako and Gisborne were able to recycle a range of farm waste all in one go at events held during late August and September 2019.

Each event handled five different waste streams:



Agricultural chemicals and containers



Drums



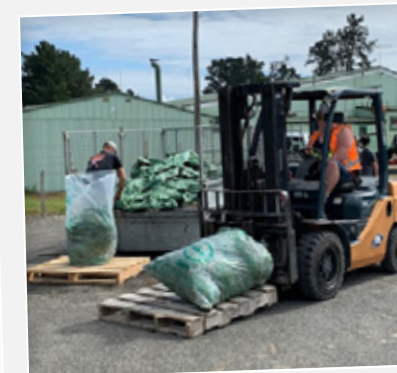
POPs



Woven polypropylene bags



Agricultural oils



Silage and baleage wrap

Farmers and growers who participated in the events appreciated disposing of a variety of waste all in one go. A total of 283 registrants recycled or sustainably disposed of 38 tonnes of waste.

Chemical disposal was one of the main drivers for people to come to the events. Some farmers had acquired farms with chemicals and didn't know what to do with them.

The dairy farming regions of Westport and Matamata had fewer agrichemicals for disposal, but a higher quantity of empty containers and drums.



We safely dispose of obsolete or unwanted agrichemicals that need specialised sustainable disposal practices. Keeping them out of landfills and farms minimises the risks to people, animals and the environment.

Event totals

Westport							
	699kg	344kg	87kg	0.3kg	350kg	350kg	
Southland							
	1,200kg	1,490kg	1,410kg	4kg	4,260kg	420kg	
Selwyn							
	1,500kg	2,705kg	820kg	75kg	875kg	1,015kg	
Geraldine							
	1,200kg	1,726kg	1,562kg	2.5kg	765kg	990kg	
Matamata							
	2,030kg	958kg	997kg	4kg	270kg	720kg	
Gisborne							
	1,400kg	4,842kg	1,327kg	5.8kg	525kg	800kg	

In their own words:

What farmers and growers said about the events

- “Have it again, most amazing thing. Made it so easy.”
- “Great idea to have these events every now and then”
- “Good way to start disposing of stored waste on farm”
- “I had chemicals and containers in my shed for a long time”
- “Right thing to do, burning is not an option”
- “Didn’t want it to be left as a legacy for the next generation”



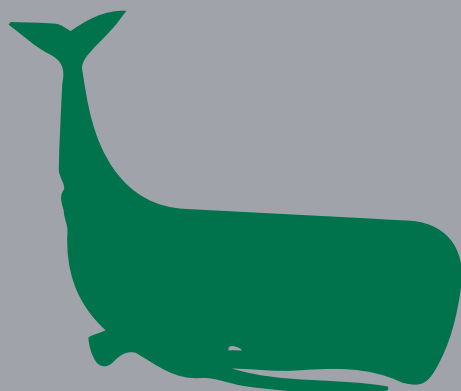
Collection totals →

since programme inception

Containers

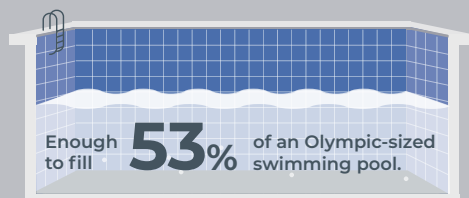
WE HAVE
COLLECTED OVER
2,842
TONNES
OF PLASTIC

THIS WEIGHS
MORE THAN
70
GIANT SPERM
WHALES



Old chemicals

WE HAVE
COLLECTED OVER
137
TONNES
OF UNWANTED OR
OBSOLETE CHEMICALS



Sites around New Zealand



Leading us forward

meet the board →



ADRIENNE WILCOCK
Chair, DairyNZ



MARK ROSS
Agcarm



ANDERS CROFOOT
Federated Farmers



MIKE SMITH
Horticulture New Zealand



RICHARD OLDS
Agrichemical distributors



DAVID MOLLOY
Rural Contractors New Zealand



ALEC MCNEIL
Local government

Making it happen

← meet the staff



From left: Wei Zeng, Emily Batchelor, Felicity Mitchell, Richard Carroll, Katie McGivern, Melanie Murray, and Tony Wilson

There were some staff changes over the 2019-2020 year, including the appointment of Richard Carroll as Commercial Manager and Melanie Murray as Administrator (part-time). Following this, Tony Wilson replaced Simon Andrew as General Manager in September 2020. Isabella MacIntyre commenced maternity leave in October and Felicity Mitchell stepped into the Operations Adviser role. We also welcomed Emily Batchelor as the team's Customer Services Representative and main point of contact on the 0800 number.

Thanks for making this happen



Connect with us

Freephone 0800 AGRECOVERY
(0800 247 326)
Landline 04 499 6777

www.agrecovery.co.nz
info@agrecovery.org.nz

Agrecovery Rural Recycling
 Agrecovery
 @ruralrecycleNZ



AGRECOVERY
Rural Recycling Programme



www.agrecovery.co.nz

This was printed on eco-friendly paper

0800 AGRECOVERY
(0800 247 326)

